




#15,223

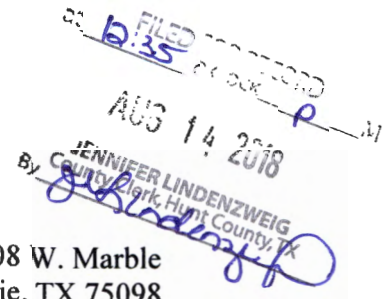
Farmers Electric Cooperative

A Touchstone Energy Cooperative 

301 N. Hillcrest
Sulphur Springs, TX 75482

2000 I-30 E
Greenville, TX 75402

108 W. Marble
Wylie, TX 75098



Monday, July 23, 2018

Office of County Commissioners
PO BOX 1097
Greenville TX 75403

Farmers Electric Cooperative Member: Farmers Electric Cooperative
Service Order Number: 1711001355

Greetings:

Farmers Electric Cooperative, Inc. is requesting permission to construct electrical power distribution facilities along County Road [4516](#) which intersects with County Road 4605 in Hunt County, Texas.

Site location map and construction sketches are enclosed. The construction sketch details the proposed work. All road crossings will have a minimum vertical clearance of 22 feet.

If you have any questions, please contact me at any time.

Sincerely,

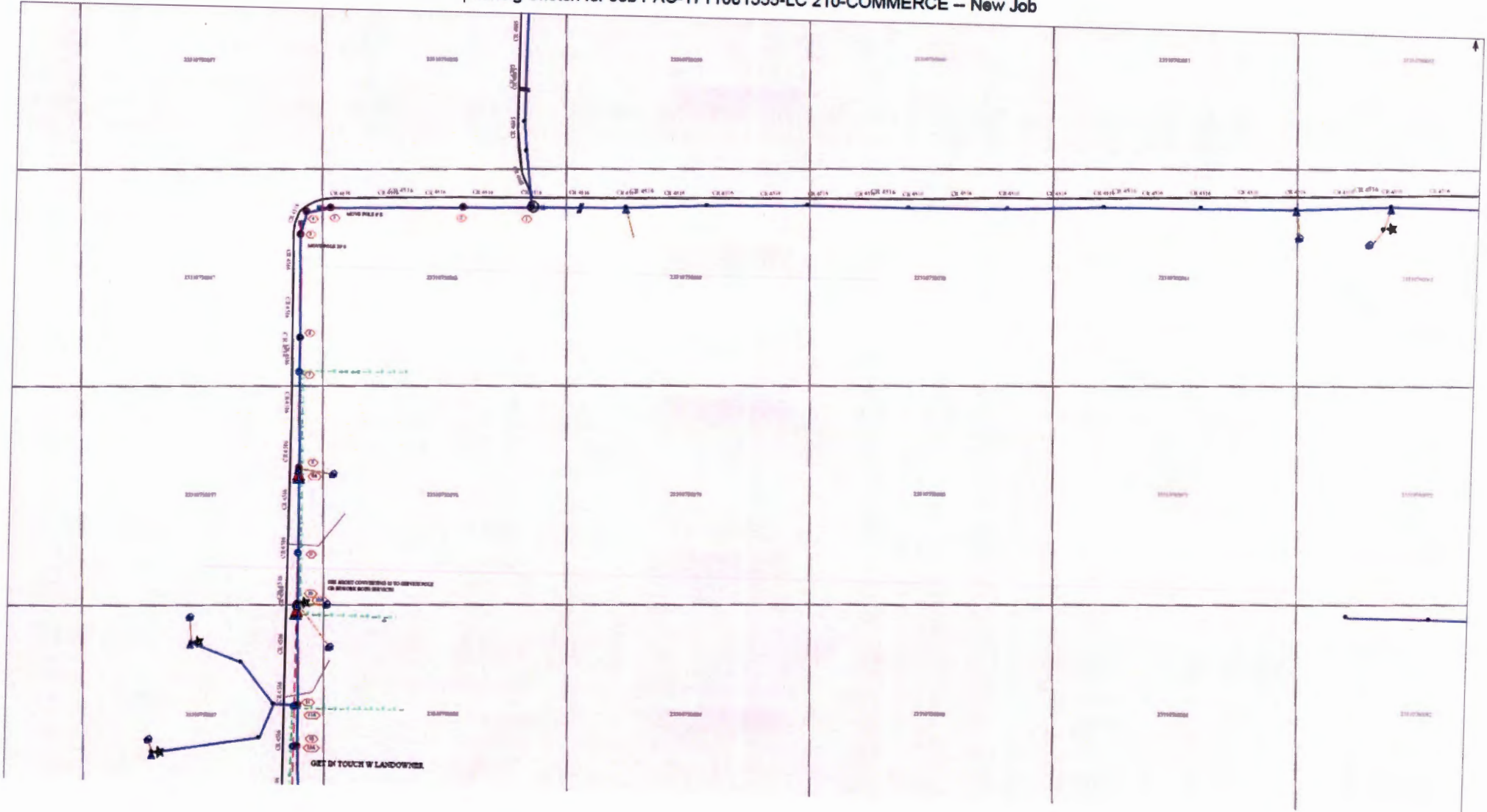
Patrick Covington
Project Coordinator

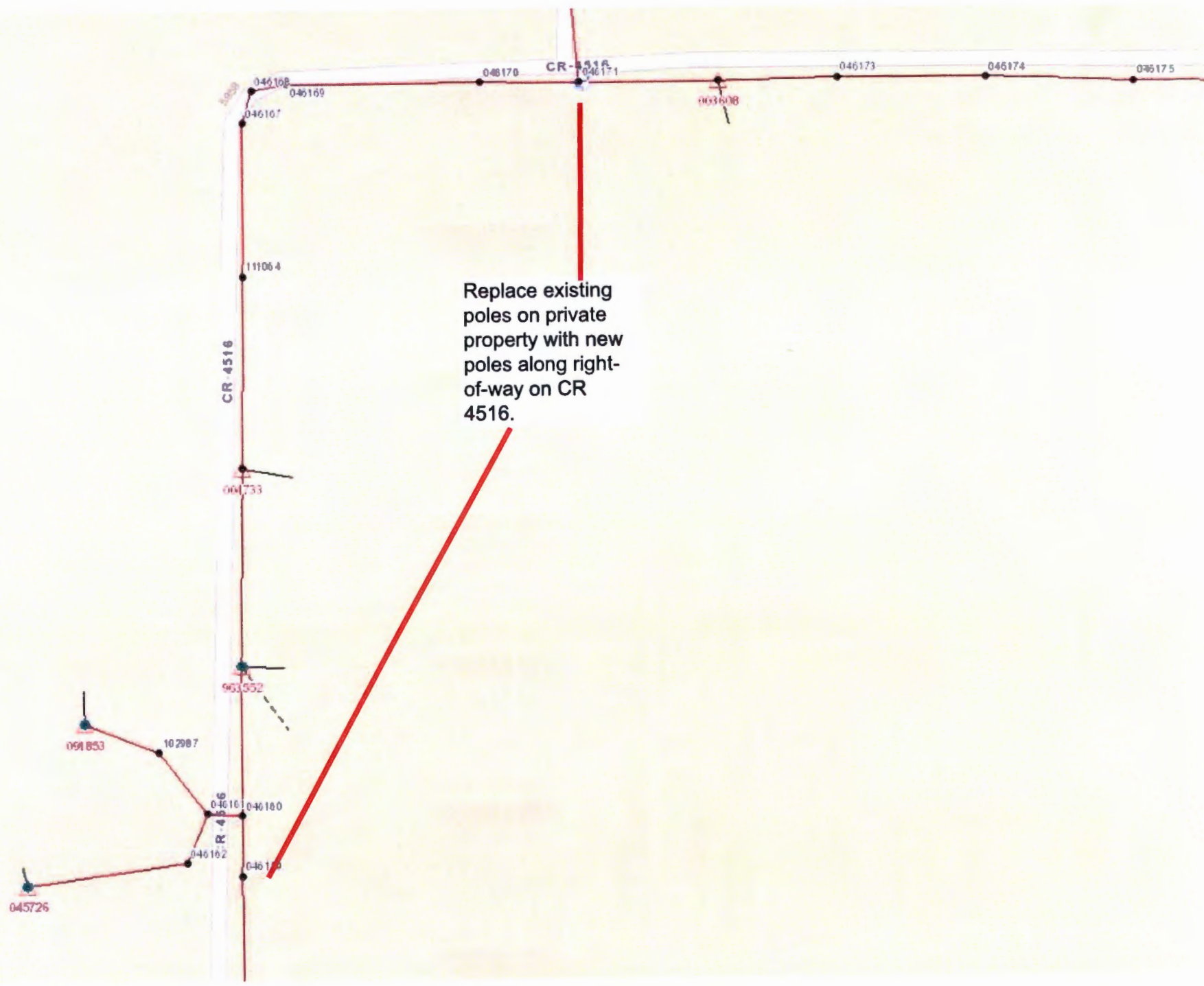
pcovington@farmerselectric.coop
Phone 903-513-1331

Submitted by Brandon Darrow
Field Engineering Coordinator

Enclosures

Staking Sketch for Job PAC-1711001355-LC 210-COMMERCE – New Job





Replace existing poles on private property with new poles along right-of-way on CR 4516.